

FLYING CLOUD (FCM) 11 SW UTC-6(-5DT) N44°49.63' W93°27.43'

906 B S4 FUEL 100, 100LL, JET A OX 3, 4 TPA-1906(1000)

RWY 10R-28L: H3909X75 (ASPH) S-30 HIRL

RWY 10R: MALSR. VASI(V4L)—GA 3.0° TCH 41'. Rgt tfc.

RWY 28L: REIL. VASI(V4L)—GA 3.0° TCH 45'. Thld dsplcd 200'.
Bldg.

RWY 10L-28R: H3599X75 (ASPH) S-12.5 MIRL

RWY 28R: Road. Rgt tfc.

RWY 18-36: H2691X75 (ASPH) S-12.5 MIRL

RWY 18: REIL. VASI(V4L)—GA 3.0° TCH 37'. Tree.

RWY 36: REIL. VASI(V4L)—GA 3.0° TCH 31'. Road.

AIRPORT REMARKS: Attended 1300-0400Z†. Self serve fuel available 24 hrs. Rwy 10L-28R CLOSED when twr clsd. Arpt CLOSED to jets not meeting FAR 36, jet training and acft weighting more than 60,000 lbs gross weight. Maintenance run-ups are prohibited between 0400-1300Z†. Ultralight ops prohibited. Deer and waterfowl on and in vof arpt. When ATCT clsd snow removal operators monitor 118.1. Rwy 10R and Rwy 28R rgt tfc during twr hrs only. For noise abatement procedures call 612-725-6327. Aircraft please follow voluntary noise abatement procedures as published and Rwy 10R-28L is the preferred noise abatement runway. When twr clsd ACTIVATE MIRL Rwy 18-36 and HIRL Rwy 10R-28L, MALSR Rwy 10R, REIL Rwy 28L and Rwy 18 and 36, MIRL Rwy 10L-28R activated only when Rwy 10R-28L CLOSED. VASI Rwsy 10R, 28L, 18 and 36—118.1.

WEATHER DATA SOURCES: ASOS (952) 941-4156.

COMMUNICATIONS: CTAF 118.1 ATIS 124.9

UNICOM 122.95

PRINCETON FSS (PNM) TF 1-800-WX-BRIEF. NOTAM FILE FCM.

Ⓡ MINNEAPOLIS APP/DEP CON 134.7

MINNEAPOLIS CLNC DEL 121.7 (When twr closed)

TOWER 118.1 125.2 (Apr-Oct 1300-0400Z†, Nov-Mar 1300-0300Z†) GND CON 121.7 CLNC DEL 121.7

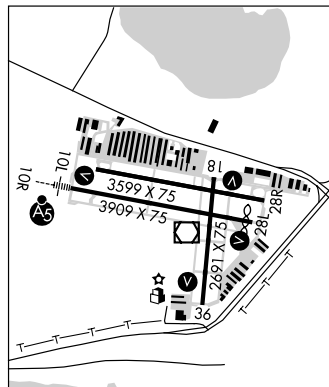
AIRSPACE: CLASS D svc Apr-Oct 1300-0400Z† Nov-Mar 1300-0300Z† other times CLASS E.

RADIO AIDS TO NAVIGATION: NOTAM FILE FCM.

(L) VOR/DME 111.8 FCM Chan 55 N44°49.54' W93°27.41' at fld. 900/6E.

ILS 109.7 I-FCM RWY 10R. GS unusable byd 5 degrees left of course. GS unmonitored 0300-1200Z†.

COPTER ILS 109.7 I-FCM Rwy 10R.



TWIN CITIES

L-12L, 14H, A

IAP, AD